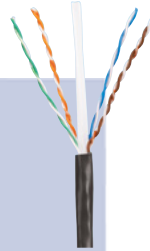


# TX6™ U/UTP Outside Plant (OSP) Copper Cable

## specifications

Category 6 OSP cable shall meet the ANSI/TIA-568.2-D and IEC 61156-5 Category 6 component Standards. The conductors shall be 23 AWG construction with polyolefin insulation. The cable shall have a gel-filled construction to prevent moisture migration in underground and wet applications and a wide temperature range for extreme weather environments. The copper conductors shall be twisted in pairs, separated by a pair separator and covered with a UV-resistant and abrasion-resistant polyethylene (PE) jacket. Product is to be used in duct and conduit installations only. Not to be used in aerial or direct burial applications.



## technical information

<b>Electrical Performance:</b>	Certified channel performance in a 4-connector configuration up to 100m and exceeds ANSI/TIA-568.2-D Category 6 and ISO 11801 Class E standards at swept frequencies up to 250 MHz Certified component performance up to 100m and exceeds the component requirements of ANSI/TIA-568.2-D and IEC 61156-5 Category 6 component standards at swept frequencies up to 250 MHz
<b>Conductors/insulators:</b>	23 AWG solid copper insulated with polyolefin
<b>Standards compliance:</b>	ANSI/TIA-568.2-D Category 6 and ISO 11801 Class E; IEC 60794-1-2F5 Method B Water Prevention Requirement EN50575: Euroclass Fca
<b>Installation tension:</b>	25 lbf (110 N) maximum
<b>Temperature rating:</b>	-22°F to 140°F (-30°C to 60°C) during installation -40°F to 176°F (-40°C to 80°C) during operation
<b>Cable jacket:</b>	Black UV-resistant and abrasion-resistant polyethylene (PE)
<b>Cable diameter:</b>	0.262" (6.7mm) nominal
<b>Cable weight:</b>	0.262" (6.7mm) nominal
<b>Packaging:</b>	1000' (305m) on a reel

## key features and benefits

<b>Robust design</b>	Protects against environmental elements that can cause electrical performance failures
<b>Flooding compound</b>	Waterproof gel prevents moisture migration
<b>Reel</b>	Ensures proper performance and provides quick installation
<b>Descending length cable markings</b>	Easy identification of remaining cable reduces installation time and cable scrap

## applications

TX6 U/UTP OSP Copper Cable is a component of the TX6 UTP Copper Cabling System. This end-to-end system provides Gigabit Ethernet performance with usable bandwidth beyond 250 MHz. With certified performance to the ANSI/TIA-568.2-D Category 6 and ISO 11801 Class E Standards, this system will support the following applications:

- Ethernet 10BASE-T
- 100BASE-T (Fast Ethernet)
- 1000BASE-T (Gigabit Ethernet)

**PRODUCT IS TO BE USED IN DUCT AND CONDUIT INSTALLATIONS ONLY.  
NOT TO BE USED IN AERIAL OR DIRECT BURIAL APPLICATIONS.**

### TX6 UTP Copper Cable

**OSP:** PU06C04BL-CEG

### Mini-Com® TX6 PLUS UTP Jack Module

**Jack module:** CJ688TGIW\*

### TX6 PLUS UTP Patch Cords – CM

**Foot lengths:** UTPSP3^Y

**Meter lengths:** UTPSP1^^MY

### DP6™ PLUS Punchdown Patch Panels

**Angled, 24-port, 1 RU:** DPA24688TGY

**Angled, 48-port, 1 RU:** DPA48688TGY

**Flat, 12-port:** DP12688TGY

**Flat, 24-port, 1 RU:** DP24688TGY

**Flat, 48-port, 2 RU:** DP48688TGY

### Mini-Com® Flush Mount Modular Patch Panels

**Angled, 24-port, 1 RU:** CPPA24FMWBLY

**Angled, 48-port, 1 RU:** CPPA48FMWBLY

**Flat, 24-port, 1 RU:** CPPA24FMWBLY

**Flat, 48-port, 2 RU:** CPPA48FMWBLY

### Termination and Cable Prep Tools

**Termination tools:** EGJT or TGJT

**Conductor snipping tool:** CWST

**Conductor stripping tool:** CJUST

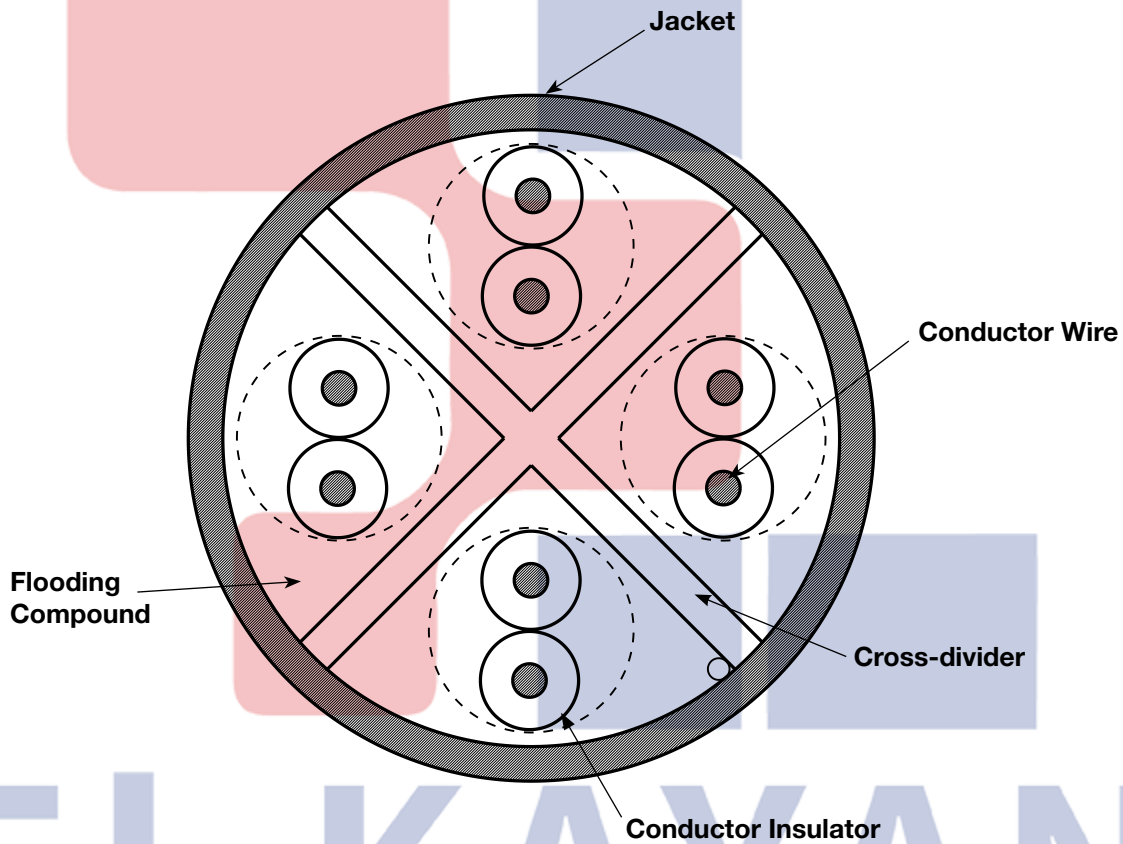
\*To designate a color, add suffix  
IW (Off White), EI (Electric Ivory),  
IG (International Gray), WH (White),  
BL (Black), OR (Orange), RD (Red),  
BU (Blue), GR (Green), YL (Yellow), or  
VL (Violet).  
Country of Origin, China: PU06C04BL-CEG

# TX6™ U/UTP Outside Plant (OSP) Copper Cable

## additional specification

Mechanical Test	
Ultimate Breaking Strength	>90 lbf (400 N)
Minimum Bend Radius	4 × Cable Diameter
Electrical Test	
Nominal Velocity of Propagation (NVP)	67% nominal
Operating Voltage, Maximum	80 V

## cable construction



EL-KAYAN  
TECHNOLOGY

### WORLDWIDE SUBSIDIARIES AND SALES OFFICES

PANDUIT US/CANADA  
Phone: 800.777.3300

PANDUIT EUROPE LTD.  
London, UK  
Phone: 44.20.8601.7200

PANDUIT SINGAPORE PTE. LTD.  
Republic of Singapore  
Phone: 65.6305.7575

PANDUIT JAPAN  
Tokyo, Japan  
Phone: 81.3.6863.6000

PANDUIT LATIN AMERICA  
Guadalajara, Mexico  
Phone: 52.33.3777.6000

PANDUIT AUSTRALIA PTY. LTD.  
Victoria, Australia  
Phone: 61.3.9794.9020

For a copy of Panduit product warranties, log on to [www.panduit.com/warranty](http://www.panduit.com/warranty)

**PANDUIT**®

For more information  
Visit us at [www.panduit.com](http://www.panduit.com)  
Contact Customer Service by email: [cs@panduit.com](mailto:cs@panduit.com)  
or by phone: 800.777.3300

©2023 Panduit Corp.  
ALL RIGHTS RESERVED.  
GOSP407--WW-ENG  
5/2023