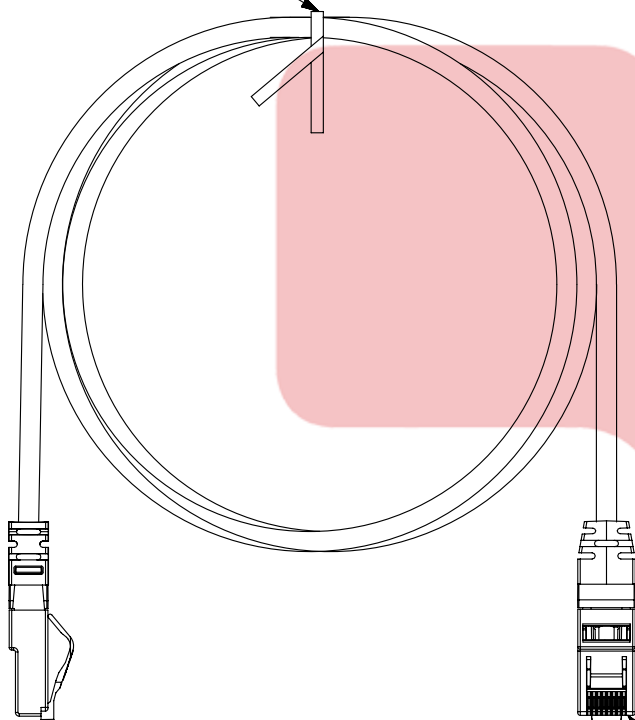


THIS COPY IS PROVIDED ON A RESTRICTED BASIS AND IS NOT TO BE USED IN ANY WAY DETRIMENTAL TO THE INTERESTS OF PANDUIT CORP.

TWIST TIE



T568B WIRING SCHEME

PLUG POSITION:

- 1
- 2
- 3
- 4
- 5
- 6
- 7
- 8

CABLE WIRE:
 WHITE/ORANGE
 ORANGE
 WHITE/GREEN
 BLUE
 WHITE/BLUE
 GREEN
 WHITE/BROWN
 BROWN

PLUG POSITION 1

NOTES:

1. SEE TABLES FOR AVAILABLE LENGTHS AND COLORS.
2. SEE CURRENT CATALOG FOR VARIOUS APPLICATIONS AND TO INDICATE PACKAGE QUANTITY.
3. SEE CATALOG FOR A COMPLETE LIST OF PARTS APPLICABLE FOR USE WITH THIS PART.

"XX" PART LENGTH TABLE	
PANDUIT P/N	LENGTH
NK6PC3**Y	3 FT
NK6PC5**Y	5 FT
NK6PC7**Y	7 FT
NK6PC9**Y	9 FT
NK6PC10**Y	10 FT
NK6PC14**Y	14 FT
NK6PC20**Y	20 FT
NK6PC1M**Y	1 M
NK6PC2M**Y	2 M
NK6PC3M**Y	3 M
NK6PC4M**Y	4 M
NK6PC5M**Y	5 M

COLOR TABLE	
** CODE	COLOR
NO SUFFIX	WHITE
BU	BLUE
RD	RED
GR	GREEN
YL	YELLOW
VL	VIOLET

XX = LENGTH
 ** = COLOR

PART NUMBER
 NK6PCXX**Y, NK6PCXXM**Y

TITLE
 NETKEY CATEGORY 6 PATCH CORD

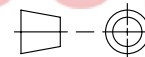
CUSTOMER DRAWING

ITEM REVISION NAME
 M02479IX/05

DATASET FILE NAME
 M02479IX_DC234/00B

UNLESS OTHERWISE SPECIFIED,
 DIMENSIONAL TOLERANCES ARE: IN [mm]

.x ± .xxx ± .010 [.3]
 .xx ± .03 [.8] ANGLES ±



THIRD ANGLE
 PROJECTION

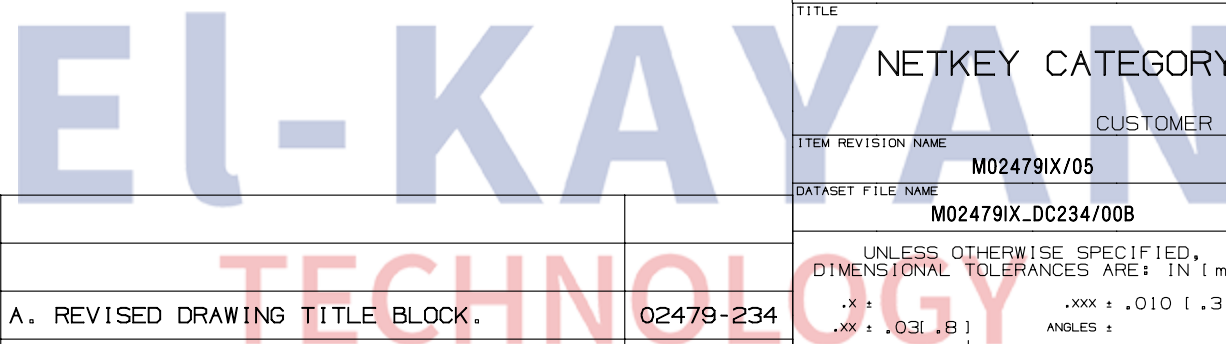
MATERIAL:

DRAWING NUMBER:

02479-234

REV	DATE	BY	CHK	APR	DESCRIPTION	ECN
1	6/13/14	JSP	REFR	LPH	A. REVISED DRAWING TITLE BLOCK.	02479-234
R	2-25-06	LZ	WJC	WJC	RELEASED TO PRODUCTION	02479-234

DRAWN BY LZ	DATE 2-25-06	CHK WJC	SCALE NONE	SHT 1 OF 1	SIZE A
----------------	-----------------	------------	---------------	------------	-----------



D10100DA/14